

NACHAM TONKIN

The Nacham post office opened in 1887 and operated until 1946. Nacham's type E2 postmark, the first to utilize the non-hyphenated spelling, was in service for three decades.



POSTMARK TYPE: E2
PERIOD OF USE: 1894-1924



POSTAL MARKINGS

NACHAM TONKIN 15 OCT 10
LANGSON TONKIN 17 OCT 10
HANOI TONKIN 17 OCT 10

NACHAM
TONKIN

The second and final postmark to employ the non-hyphenated spelling "NACHAM" was a type G device first introduced in 1924.



POSTMARK TYPE: G
PERIOD OF USE: 1924-43



POSTAL MARKINGS
NACHAM TONKIN 12-2 24

NACHAM
TONKIN

Over time, changes occurred in Nacham's type G postmark such as smaller lettering and the addition of the time of day in the postmark.



POSTMARK TYPE: G
PERIOD OF USE: 1924-43



POSTAL MARKINGS
NACHAM TONKIN 2-8 35
airmail label
REVERSE
HANOI R.P. TONKIN 4-8 35

NA-CHAM TONKIN

The first postmark with the hyphenated "NA-CHAM" spelling was a type G device. This postmark was in service for a decade and a half. The post office stopped operations in 1946.



POSTMARK TYPE: G
PERIOD OF USE: 1929-44



POSTAL MARKINGS

NA-CHAM TONKIN 20-8 35
airmail label

framed "Hanoi-Marseille" routing instruction

REVERSE

HANOI R.P. TONKIN 21-8 35
PARIS R.P. AVION I • IX 1935

NAM-DINH TONKIN

The Nam-Dinh post office began operations in 1884. The first postmark recorded for Nam-Dinh was a type B1 device. This postmark was only used in the nineteenth century.



POSTMARK TYPE: B1
PERIOD OF USE: 1884-97



POSTAL MARKINGS
NAM-DINH TONKIN 25 FEVR. 86
REVERSE
LILLE NORD 9 AVRIL 86

NAM-DINH TONKIN

The French established a cotton spinning mill works at Nam-Dinh which was to become the colony's largest single employer. The type E2 postmark was in service for three decades.



POSTMARK TYPE: E2
PERIOD OF USE: 1894-1922



POSTAL MARKINGS
NAM-DINH TONKIN 1 AVRIL 09
REVERSE
NAM-DINH TONKIN 1 AVRIL 09
HA NOI TONKIN 1 AVRIL 09
PHU-LANG-THUONG TONKIN 2 AVRIL 09
LAM TONKIN 2 AVRIL 09

NAMDINH
TONKIN

Nam-Dinh's version of the type E2 postmark with the non-hyphenated spelling "NAMDINH" was in service for 15 years, about half the period of the hyphenated counterpart.



POSTMARK TYPE: E2
PERIOD OF USE: 1911-26



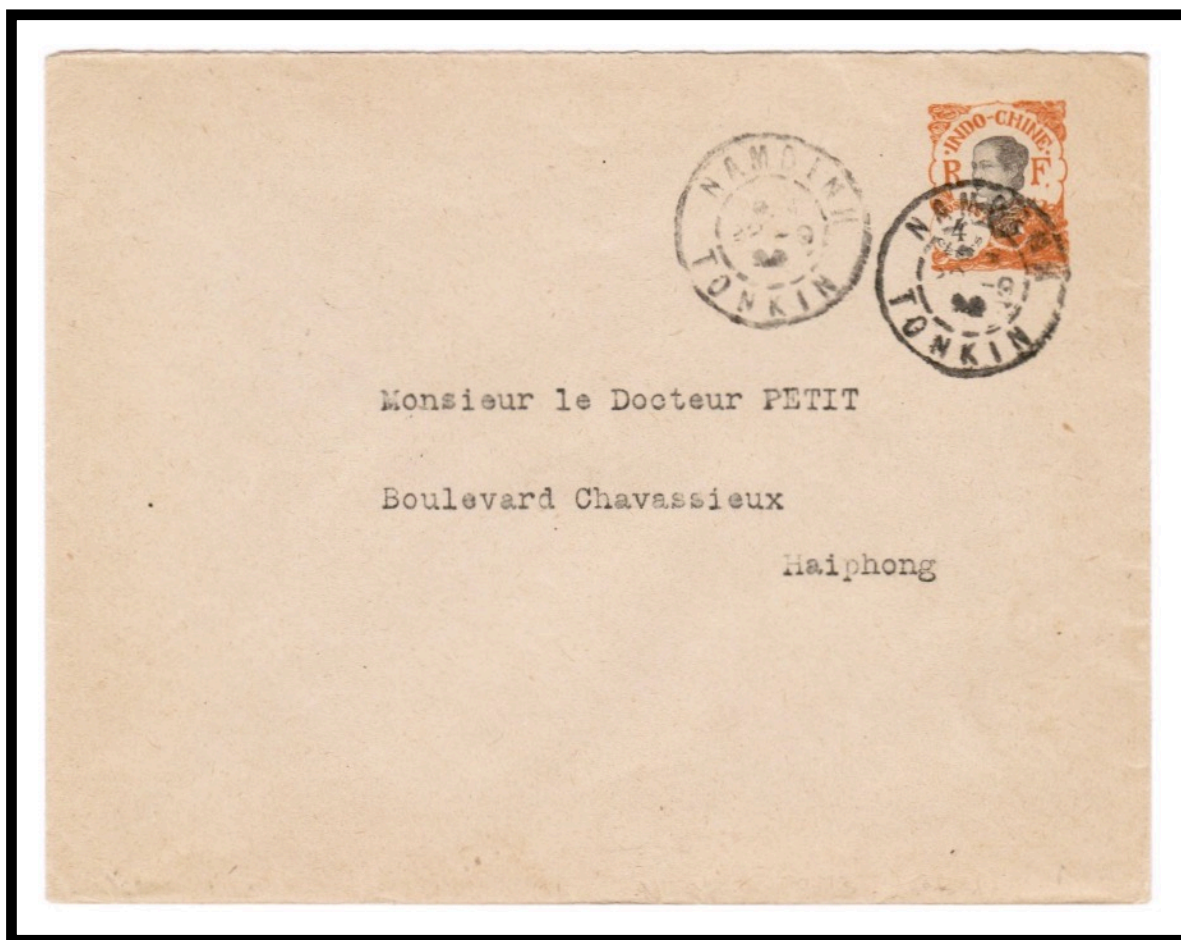
POSTAL MARKINGS
NAMDINH TONKIN 2 MAI 23

NAMDINH
TONKIN

Type E2(ch) postmarks for Namdinh employed both the hyphenated and the non-hyphenated spellings. The two types were in service during roughly the same period.



POSTMARK TYPE: E2 (ch)
PERIOD OF USE: 1913-24



POSTAL MARKINGS
NAMDINH TONKIN 22-9 22
REVERSE
HAIPHONG TONKIN 22-9 22

NAM-DINH TONKIN

Nam-Dinh's post office used one of the less common formats for its postmark – the type E1(ch) layout (large format, double solid circles with month indicated by a numeral). The first year of use for the E1(ch) postmark was 1917.



POSTMARK TYPE: E1(ch)
PERIOD OF USE: 1917-21



POSTAL MARKINGS

NAM-DINH TONKIN 2-11 17
HOKOW 4 NOV 17

NAM-DINH
TONKIN

Like its earlier type E2 postmarks, Nam-Dinh employed both the hyphenated and non-hyphenated spellings for its type G postmarks.



POSTMARK TYPE: G
PERIOD OF USE: 1924-45



POSTAL MARKINGS
NAM-DINH TONKIN 17-10 34
REVERSE
SAIGON-CENTRAL COCHINCHINE 20 OCT 34

NAMDINH
TONKIN

The last postmark that employed the non-hyphenated "NAM DINH" spelling was a type G device. The postmark's first year of use was 1923.



POSTMARK TYPE: G
PERIOD OF USE: 1923-44



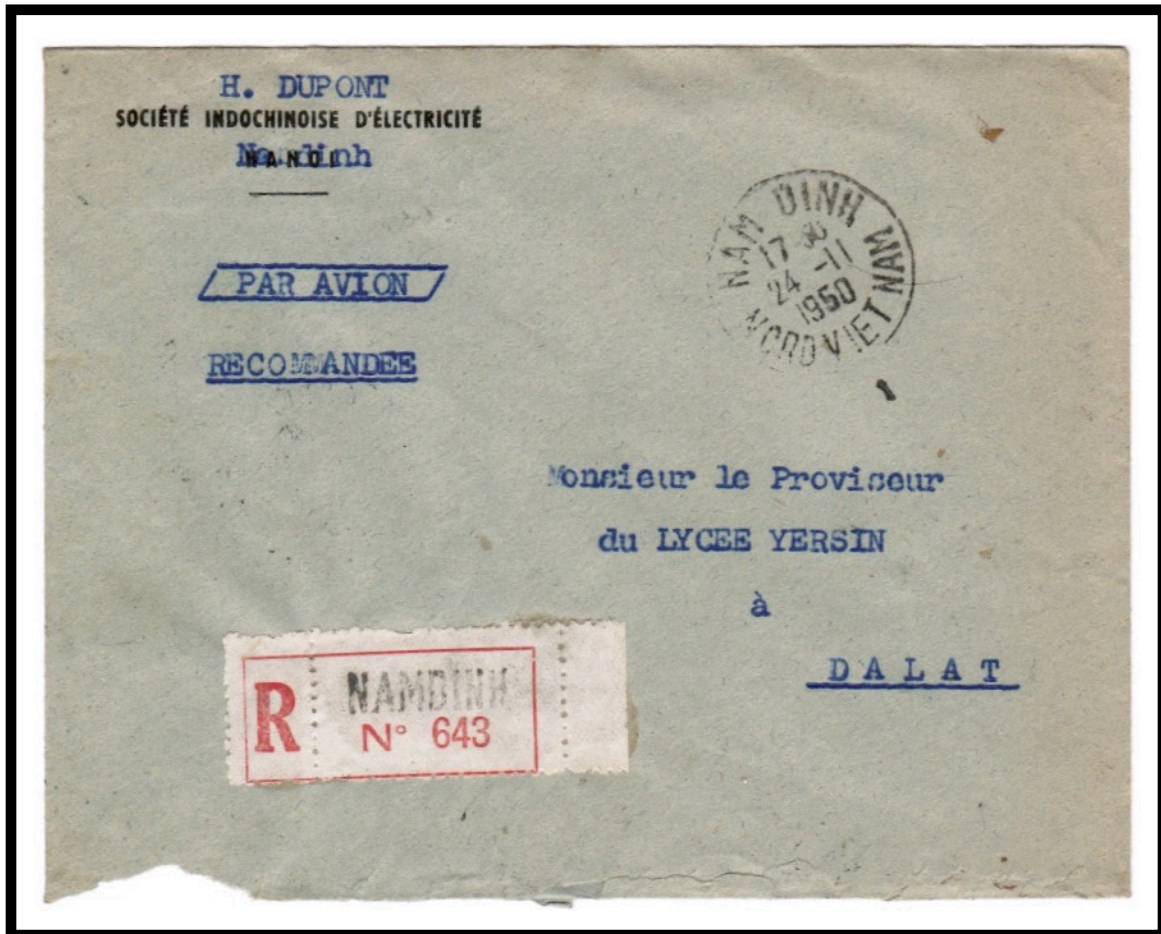
POSTAL MARKINGS
NAM DINH TONKIN 28-10 23
REVERSE
HA NOI TONKIN 28-10 23

NAM DINH
TONKIN

When new postmarks were introduced replacing "TONKIN" with "NORD VIET NAM", the city's name was spelled with a space as "NAM DINH."



POSTMARK TYPE: V
PERIOD OF USE: 1949-50



POSTAL MARKINGS

NAM DINH NORD VIET NAM 24-11 1950
registration label

REVERSE

HANOI R.P. NORD VIET NAM 25-11 1950
DALAT PLATEAUX-INDOCHINOIS 28-11 1950

NAM-DINH
VIET-NAM

The last postmark from the colonial period in use at Nam-Dinh was the type W2 format. It disappeared after the French defeat in Indochina.



POSTMARK TYPE: W2
PERIOD OF USE: 1951-54



POSTAL MARKINGS
NAM-DINH VIET NAM 20-7 1951
REVERSE
HA-NOI VIET-NAM 21-7 1951

NA THUOC
TONKIN

Although the spelling has been reported as "NATHUOC," there is actually a space between the "A" and "T," yielding "NA THUOC." Only a type E1 postmark is known with this spelling.



POSTMARK TYPE: E1
PERIOD OF USE: 1913-29



POSTAL MARKINGS
NA THUOC TONKIN 10 AVRIL 21
REVERSE
HANOI TONKIN 15-4 21

NGA-KHE
TONKIN

The Nga-Khe post office operated from 1 October 1929 until 1946. Despite its relative longevity, the post office is only known to have utilized a single style of postmark, a type G device.



POSTMARK TYPE: G
PERIOD OF USE: 1929-45



POSTAL MARKINGS

NGA-KHE TONKIN 22-9 32
airmail and expedited service labels
Saigon-Marseilles routing instruction

REVERSE

PHU-LY TONKIN 23-9 32
TOURANE ANNAM 24-9 32
SAIGON-CENTRAL COCHINCHINE 26-9 32

NGAN-SON TONKIN

Ngan-Son's first postmark was a type D1 device introduced when the post office opened in 1897. It remained in service for nearly two decades.



POSTMARK TYPE: D1
PERIOD OF USE: 1897-1915



POSTAL MARKINGS
CORPS EXPEDIT^{RE} TONKIN
NGAN-SON TONKIN 18 SEPT 98
REVERSE
CAO-BANG TONKIN 19 SEPT 98
HAIPHONG TONKIN 23 SEPT 98

NGANSON
TONKIN

Only a single postmark format, type E2, employed the non-hyphenated "NGANSON" spelling variation. The type E2(ch) postmark entered service in 1923.



POSTMARK TYPE: E2
PERIOD OF USE: 1923-28



POSTAL MARKINGS
NGANSON TONKIN 16 SEPT. 23
REVERSE
HANOI TONKIN 18-9 23

NGUYEN-BINH
TONKIN

When it opened in 1897, the post office at Nguyen-Binh began using a type D1 postmark. The postmark remained in service for three decades.



POSTMARK TYPE: D1
PERIOD OF USE: 1897-1926



POSTAL MARKINGS
NGUYEN-BINH TONKIN 25 JANV 24
REVERSE
CAOBANG TONKIN 26-1 24
HA NOI TONKIN 28-1 24

NGUYEN-BINH TONKIN

The Nguyen-Binh post office operated until 1946. The last postmark used at Nguyen-Binh was the type G device.



POSTMARK TYPE: G
PERIOD OF USE: 1926-43



POSTAL MARKINGS

NGUYEN-BINH TONKIN 31-1 33
airmail and registration labels
framed Saigon-Marseille routing instruction

REVERSE

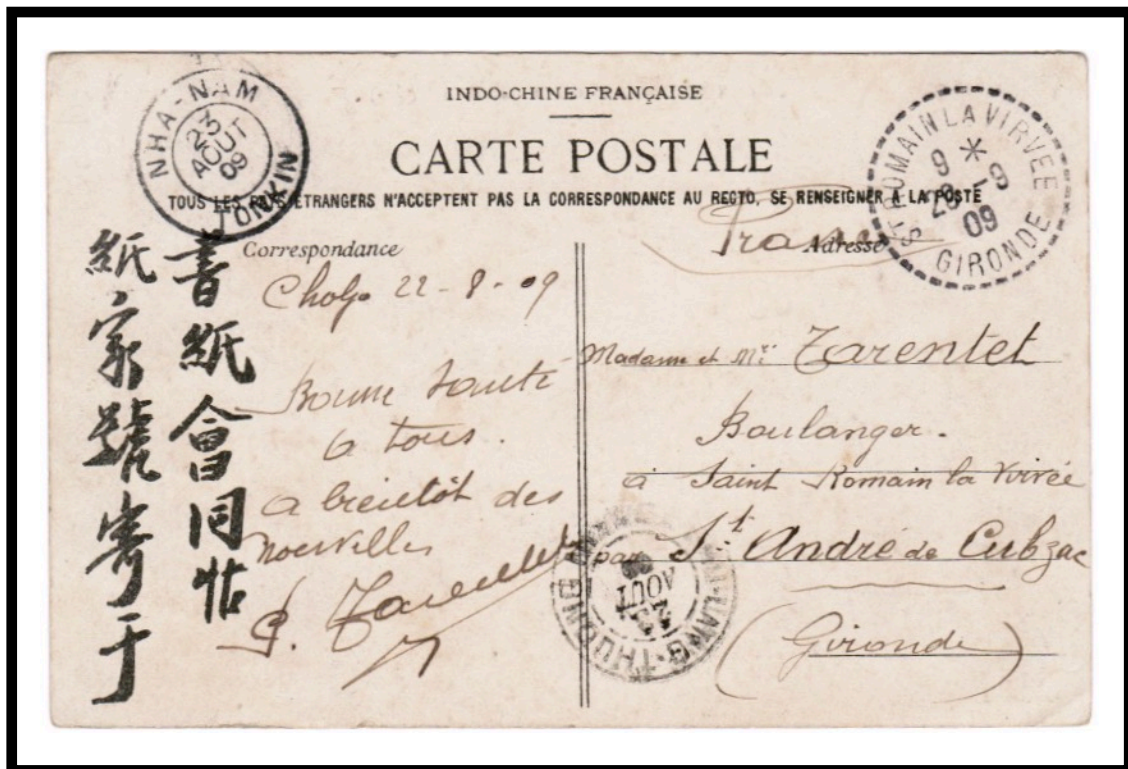
CAO-BANG TONKIN 31-1 33
HA-NOI R.P. TONKIN 2-2 33
URMATT BAS RHIN 25-2 33

NHA-NAM TONKIN

The Nha-Nam post office operated from 1897 until 1946. Nha-Nam's earliest known postmark, in the type D1 format, remained in service for nearly two decades.



POSTMARK TYPE: D1
PERIOD OF USE: 1898-1915



POSTAL MARKINGS

NHA-NAM TONKIN 23 AOUT 09
PHU-LANG-THUONG TONKIN 23 AOUT 09
ST ROMAIN LA VIRVEE GIRONDE 29-9 09

REVERSE

NHA-NAM TONKIN 23 AOUT 09

NHA-NAM TONKIN

The Nha-Nam post office opened in 1897. This was the period of the Annam-Tonkin Expeditionary Corps with free mail for soldiers serving in the combat zone. This 1898 military letter was posted during the first year of the type D1 postmark.



POSTMARK TYPE: D1
PERIOD OF USE: 1898-1915



POSTAL MARKINGS
TONKIN CORPS EXPEDIT^{RE}
NHA-NAM TONKIN 16 MAI 98

NINH-BINH TONKIN

When it opened in 1884, the Ninh-Binh post office put into service a type B1 format device as its first postmark. The postmark remained in service for a quarter century.



POSTMARK TYPE: B1
PERIOD OF USE: 1884-1909



POSTAL MARKINGS

NINH-BINH TONKIN 4 AVRIL 04
NEDROMAH ORAN 10 MAI 06

NINH-BINH TONKIN

Ninh-Binh's second postmark, a type D1 device, was in service for over 35 years. The type D1 postmark was used concurrently with Ninh-Binh's type E postmarks.



POSTMARK TYPE: D1
PERIOD OF USE: 1890-1926



POSTAL MARKINGS

NINH-BINH TONKIN 17 DEC 17
framed R with manuscript registration number

REVERSE

HAIPHONG TONKIN 18 DEC 17
CASTRES TARN 7-2 18
MARSEILLE BCHES DU RHONE 8-2 18

NINH-BINH
TONKIN

On the occasion of the turn of the new century, the Ninh-Binh post office chose to use four digits to represent the year in its type D1 postmark. In this case, the postmark was struck on a letter from a member of the Annam-Tonkin Expeditionary Corps in 1900.



POSTMARK TYPE: D1
PERIOD OF USE: 1890-26



POSTAL MARKINGS
TONKIN CORPS EXPEDITRE
NINH-BINH TONKIN 25 JUL. 1900

NINH-BINH
TONKIN

Ninh-Binh's type E2(ch) postmark denoted the month by a numeral rather than by an abbreviation. The first year of use of Ninh-Binh's type E2(ch) postmark was 1914.



POSTMARK TYPE: E2(ch)
PERIOD OF USE: 1914-23



POSTAL MARKINGS
NINH-BINH TONKIN 31-3 14
REVERSE
HAIPHONG TONKIN 1-4 14

NINH-BINH
TONKIN

After ten years of service, the last year that Ninh-Binh's type E2(ch) was in use was 1923.



POSTMARK TYPE: E2(ch)
PERIOD OF USE: 1913-23



POSTAL MARKINGS
NINH-BINH TONKIN 14-8 23
REVERSE
HA NOI TONKIN 15-8 23

NINH-BINH
TONKIN

The last postmark that used the hyphenated "NINH-BINH" spelling for the name of the provincial capital was a type G device. It was in service for two decades.



POSTMARK TYPE: G
PERIOD OF USE: 1923-43



POSTAL MARKINGS
NINH-BINH TONKIN 19-5 39
REVERSE
HA NOI R.P. TONKIN 19-5 39

NINHBINH
VIET-NAM

The only postmark that ever employed the non-hyphenated "NINHBINH" spelling was a type W2 device. With a first year of service in 1952, it was Ninh-Binh's last postmark from the Indochina era.



POSTMARK TYPE: W2
PERIOD OF USE: 1952-53



POSTAL MARKINGS
NINHBINH VIET-NAM 18-1 1952
REVERSE
HANOI R.P. NORD VIETNAM 21-1 1952

NINH-GIANG
TONKIN

"NINH-GIANG" was the new name designated for "PHU-NINH-GIANG" in 1926. The only postmark to use the revised name was a type G style device. The post office ceased operations in 1946.



POSTMARK TYPE: G
PERIOD OF USE: 1926-44



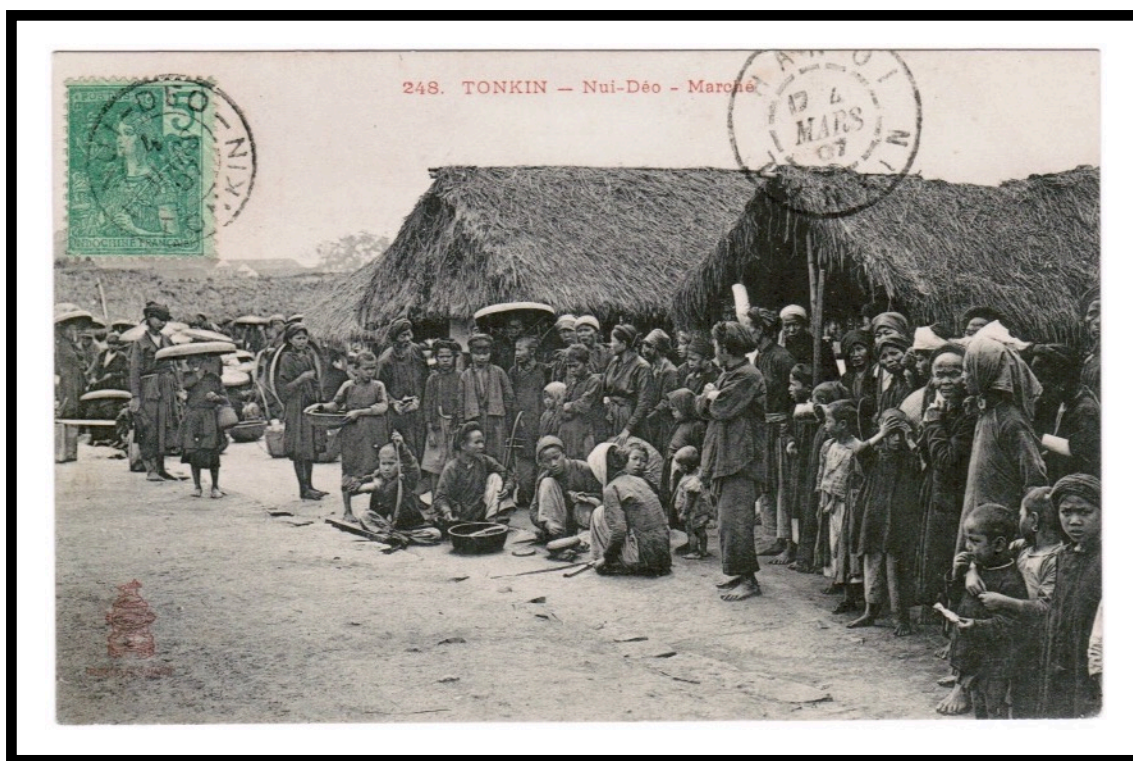
POSTAL MARKINGS
NINH-GIANG TONKIN 10-12 27
REVERSE
HAI-PHONG TONKIN 11-12 27

NUI-DEO TONKIN

Nui-Deo was a secondary post office established in 1904. Its first postmark was a type D1 device.



POSTMARK TYPE: D1
PERIOD OF USE: 1904-13



POSTAL MARKINGS

NUI-DEO TONKIN 4 MARS 07
HANOI TONKIN 4 MARS 07

REVERSE

SONTAY TONKIN 5 MARS 07

NUI-DEO
TONKIN

Nui-Deo's last known postmark was a type G device. First appearing in 1930, it remained in service well into World War II. The post office ceased operations in 1955.



POSTMARK TYPE: G
PERIOD OF USE: 1930-44



POSTAL MARKINGS

NUI-DEO TONKIN 16-6 39

REVERSE

HAI-PHONG TONKIN 16-6 39

MARSEILLE-GARE-AVION BCHES DU RHONE 22 • VI 1939

NUOC-HAI
TONKIN

Located in Caobang Province, Nuoc-Hai was a hamlet that had only a single postmark, a type G device. The post office operated from 29 April 1926 until 30 September 1935.



POSTMARK TYPE: G
PERIOD OF USE: 1928-39



POSTAL MARKINGS
NUOC-HAI TONKIN 14-3 38 (blue)
REVERSE
HANOI R.P. TONKIN 16-3 38
PARIS IX RUE HIPPOLYTE LEBAS 26 • III 1938

PAK-HA
TONKIN

The first postmark for Pak-Ha, in Laokay Province, used the hyphenated spelling.
The first recorded year of use was 1908.



POSTMARK TYPE: E2
PERIOD OF USE: 1908-31



POSTAL MARKINGS
PAK-HA TONKIN 1 MAI 08
REVERSE
PHO-LU TONKIN 3 MAI 08
LAO-KAY TONKIN 3 MAI 08

PAKHA
TONKIN

The Pak-Ha post office opened on 16 April 1916. The first postmark that employed the non-hyphenated "PAKHA" spelling was a type E2 device. A straight-line "PAKHA" handstamp was also applied to this registered letter.



PAKHA

POSTMARK TYPE: E2
PERIOD OF USE: 1923-30



POSTAL MARKINGS

PAKHA TONKIN 16 NOV 28
straight-line PAKHA
framed R with manuscript registration number

REVERSE

PHOLU TONKIN 17-11 28
HANOI R.P. TONKIN 18-11 28

PAKHA TONKIN

The last postmark that employed the non-hyphenated spelling "PAKHA" was a type G device. As a consequence of Franco-Viet hostilities, the Pakha post office closed down in 1946.



POSTMARK TYPE: G
PERIOD OF USE: 1937-44



POSTAL MARKINGS

PAKHA TONKIN 17-10 41
censor's resealing tape

REVERSE

PHO-LU TONKIN 18-10 41
HANOI R.P. BIS TONKIN 20-10 41

PHA-LONG
TONKIN

The Pha-Long post office opened in 1909. This is the first known example of Pha-Long's type E1 postmark.



POSTMARK TYPE: E1
PERIOD OF USE: 1911



POSTAL MARKINGS

PHA-LONG TONKIN 28 JUIL 11
plain "R" with manuscript registration number

REVERSE

LAO-KAY TONKIN 30 JUIL 12
HAIPHONG TONKIN 1 AOUT 12
PARIS DISTRIBUTION 3-9 12

PHAN-ME
TONKIN

The only postmark ever used by the Phan-Me post office was a type G device. The post office opened on 16 January 1926. This example from the same year is the earliest recorded use of the Phan-Me's type G postmark.



POSTMARK TYPE: G
PERIOD OF USE: 1926-44



POSTAL MARKINGS

PHAN-ME TONKIN 18-8 26

REVERSE

THAINGUYEN TONKIN 19 AOUT 26

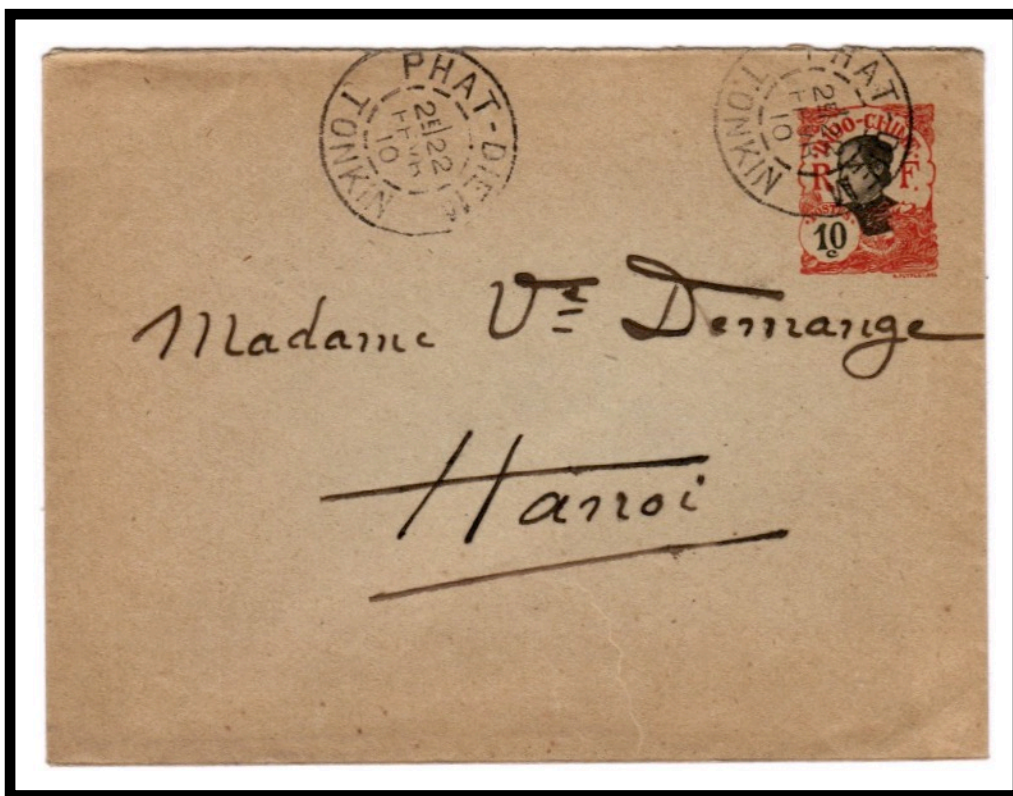
HAIPHONG TONKIN 22-8 26

PHAT-DIEM TONKIN

Formerly having rural post office status, Phat-Diem opened a principal post office in 1910. The first postmark was a type E2 device. The earliest known use of an E2 postmark is this example from 1910.



POSTMARK TYPE: E2
PERIOD OF USE: 1910-24



POSTAL MARKINGS
PHAT-DIEM TONKIN 22 FEVR 10
REVERSE
HANOI TONKIN 23 FEVR 10

PHAT-DIEM
TONKIN

After being used for decade and a half of service, Phat-Diem's type E2 postmark was removed from service in 1924.



POSTMARK TYPE: E2
PERIOD OF USE: 1910-24

POSTAL MARKINGS
PHAT-DIEM TONKIN 21 JUIN 24
framed R with manuscript registration number
REVERSE
HANOI TONKIN 22-6 24
ST ETIENNE R.P. DENFERT LOIRE 30-7 24

PHAT-DIEM TONKIN

Phat-Diem's last postmark, a type G format device, saw service for over two decades. The Phat-Diem post office ceased operations in 1946.



POSTMARK TYPE: G
PERIOD OF USE: 1924-45



POSTAL MARKINGS

PHAT-DIEM TONKIN 6-10 38

REVERSE

NINH-BINH TONKIN 6-10 38

HANOI R.P. TONKIN 7-10 38

BANGKOK G.P.O. 10 • 10 38

NOUMEA NOUVELLE CALÉDONIE 24-10 38

PHO-BANG TONKIN

Pho-Bang used the type G postmark right up to World War II, when the post office was transferred to the military.



POSTMARK TYPE: G
PERIOD OF USE: 1930-39



POSTAL MARKINGS

PHO-BANG TONKIN 22-10 32
airmail label and Saigon-Marseille route instruction

REVERSE

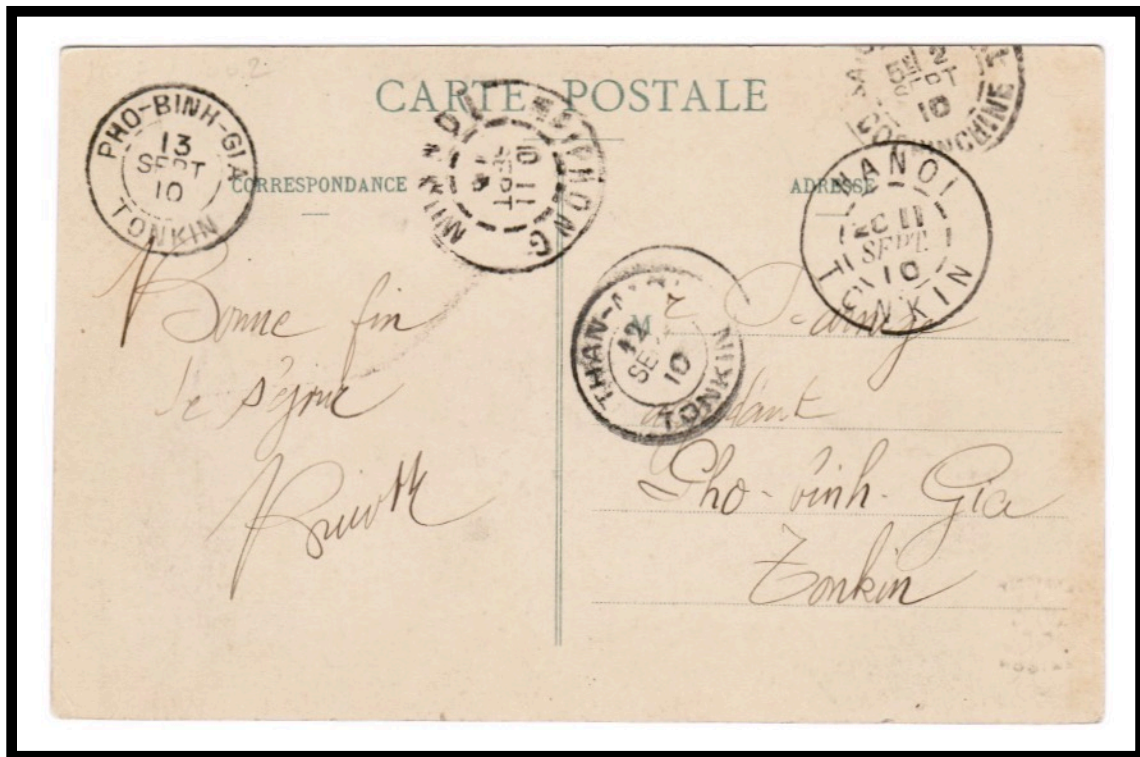
DONG-VAN TONKIN 22-10 32
HANOI R.P. TONKIN 30-10 32
HERIMOCOURT DOUBS 23-11 1932

PHO-BINH-GIA TONKIN

The Pho Binh-Gia post office began operations in 1897. The earliest known postmark from Pho-Binh-Gia is a type D1 device. This postmark remained in service for three decades.



POSTMARK TYPE: D1
PERIOD OF USE: 1898-1928



POSTAL MARKINGS

SAIGON-CENTRAL COCHINCHINE 2 SEPT 10

HAIPHONG TONKIN 11 SEPT 10

HANOI TONKIN 11 SEPT 10

THAN-MOI TONKIN 12 SEPT 10

PHO-BINH-GIA TONKIN 13 SEPT 10

REVERSE

SAIGON-CENTRAL COCHINCHINE 2 SEPT 10

PHO-BINH-GIA
TONKIN

The last postmark recorded from Pho-Binh-Gia was a type G device. The post office stopped operations in 1946 with the start of hostilities between French and Viet Minh forces.



POSTMARK TYPE: G
PERIOD OF USE: 1928-41



POSTAL MARKINGS

PHO-BINH-GIA TONKIN 1-6 30 (blue)

REVERSE

DONG-MO TONKIN 3-6 30

HAI-PHONG TONKIN 4-6 30

PHO-LU TONKIN

Pho-Lu had a secondary post office that operated from 1894 to 1946. Pho-Lu's first postmark was a type D1 device.

Normally, "red stripe" envelopes were used to help identify mail with an address written in Chinese. In this case, the address was written in French.



POSTMARK TYPE: D1
PERIOD OF USE: 1897-1911



POSTAL MARKINGS
PHO-LU TONKIN 14 JUL 02
REVERSE
YENBAI TONKIN 14 JUL 02
HANOI TONKIN 15 JUL 02
RIEMS MARNE 22-8 02

PHOLU
TONKIN

The first postmark that used the non-hyphenated "PHOLU" spelling was a type E2(ch) device. The postmark's first year of use was 1923.



POSTMARK TYPE: E2(ch)
PERIOD OF USE: 1923-33



POSTAL MARKINGS
PHOLU TONKIN 13-11 23
REVERSE
HANOI TONKIN 14-11 23

"PHONG-THO" became the new designation for "PHON-TO" in 1916. The first postmark to utilize the revised name was a type E1 device.



Grands Magasins réunis
Hanoi

Hieronymus Viator
Phong Tho

POSTAL MARKINGS
PHONG-THO TONKIN 7 DEC 23
REVERSE
LAOKAY TONKIN 9 DEC 23
HA NOI TONKIN 10-12 23

PHONG-THO TONKIN

Called Phong-To prior to 1916, Phong-Tho's last postmark was in the type G format. The post office closed after World War II in 1946.



POSTMARK TYPE: G
PERIOD OF USE: 1926-43



POSTAL MARKINGS

PHONG-THO TONKIN 1-10 35
registration label
Hanoi-Marseille routing instruction

REVERSE

LAO-KAY TONKIN 3-10 35
HANOI R.P. TONKIN 4-10 35
LORIENT MORBIHAN 14-10 35

PHUC-YEN
TONKIN

The post office at Phulo transferred to Phuc-Yen effective 27 June 1905. The first postmark for the new post office was a type F1 device, which remained in service for a quarter century.



POSTMARK TYPE: F1
PERIOD OF USE: 1905-30



POSTAL MARKINGS
PHUC-YEN TONKIN 17 SEPT 07

PHUC-YEN
TONKIN

Phuc-Yen's type E1(ch) postmark was an uncommon format among Tonkin postmarks. Phuc-Yen's E1(ch) postmark is only known from a single year, 1920.



POSTMARK TYPE: E1(ch)
PERIOD OF USE: 1920



POSTAL MARKINGS
PHUC-YEN TONKIN 2-10 20
REVERSE
HA NOI TONKIN 2-10 20

PHUC-YEN
TONKIN

The last postmark in service at the Phuc-Yen post office was a type G device. The post office ceased operations in 1946.



POSTMARK TYPE: G
PERIOD OF USE: 1923-39



POSTAL MARKINGS

PHUC-YEN TONKIN 4-10 32

REVERSE

HANOI R.P. TONKIN 4-10 32

SAIGON-CENTRAL COCHINCHINE 10-10 32

PARIS VIII DISTRIBUTION 5 • IX 1932

PHU-DA-PHUC
TONKIN

Opening on 16 September 1907, the post office at Phu-Da-Phuc first employed the type E2 postmark.



POSTMARK TYPE: E2
PERIOD OF USE: 1909-27



POSTAL MARKINGS
PHU-DA-PHUC TONKIN 24 SEPT 11
REVERSE
HANOI TONKIN 24 SEPT 11
SI LEU-TAVERNY SEINE ET OISE 29-10 11

PHU-DA-PHUC TONKIN

The Phu-Da-Phuc post office remained open until 1946. Its final postmark was a type G device, which was in service for two decades.



POSTMARK TYPE: G
PERIOD OF USE: 1923-43



POSTAL MARKINGS

PHU-DA-PHUC TONKIN 31-3 39
framed R with manuscript registration number

REVERSE

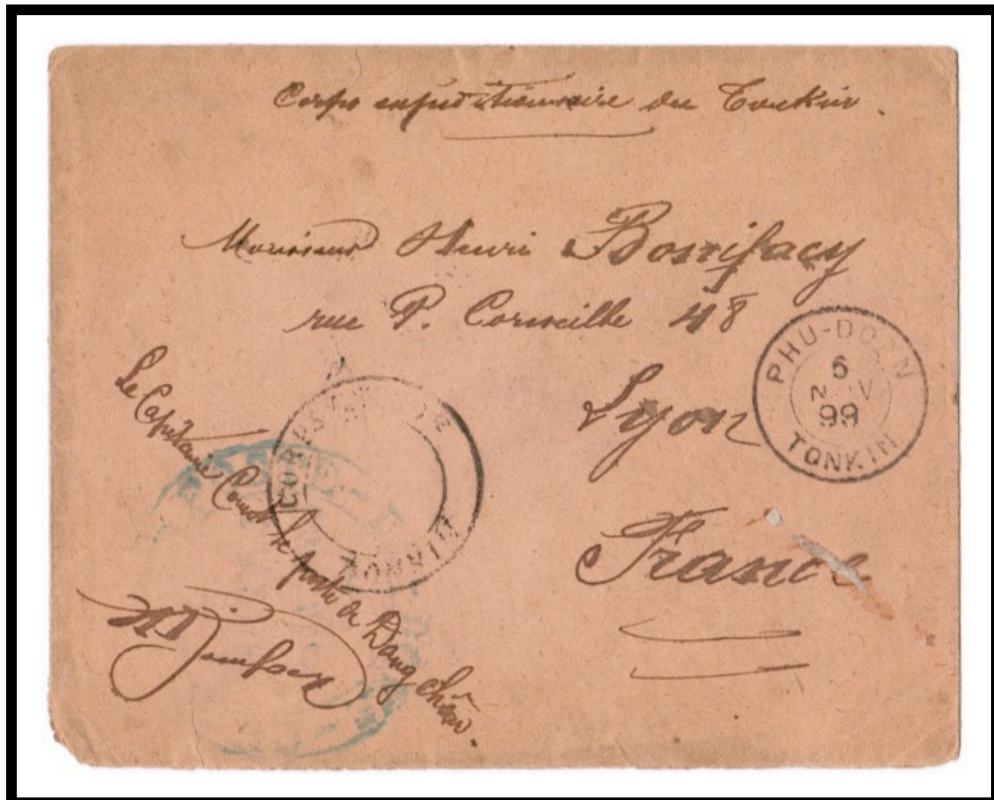
HANOI R.P. TONKIN 31-3 39

PHU-DOAN
TONKIN

The principal post office at Phu-Doan was established in 1887. Phu-Doan's type D1 postmark entered into service before the turn of the century and was used for over fifteen years.



POSTMARK TYPE: D1
PERIOD OF USE: 1897-1913



POSTAL MARKINGS
PHU-DOAN TONKIN 5 NOV 99
REVERSE
HANOI TONKIN 7 NOV 99
LYON RHONE 17 DEC 99

PHU-DOAN
TONKIN

The post office at Phu-Doan only employed the type E2 postmark variety with the month identified numerically as opposed to an abbreviation.



POSTMARK TYPE: E2(ch)
PERIOD OF USE: 1913-25



POSTAL MARKINGS
PHU-DOAN TONKIN 5-10 23
REVERSE
HANOI TONKIN 5-10 23

PHU-DOAN
TONKIN

Phu-Doan's final postmark was a type G device that was in service for nearly two decades. The principal post office closed in 1946.



POSTMARK TYPE: G
PERIOD OF USE: 1925-43



POSTAL MARKINGS
PHU-DOAN TONKIN 19-6 38
REVERSE
HANOI R.P. TONKIN 19-6 38

PHU-LANG-THUONG TONKIN

The Phu-Lang-Thuong post office began operations on 1 January 1885. Starting in 1887, the post office began using a type D1 postmarking device that remained in service for nearly two decades.



POSTMARK TYPE: D1
PERIOD OF USE: 1887-1905



POSTAL MARKINGS

PHU-LANG-THUONG TONKIN 7 AVRIL 88
CORPS EXP. TONKIN LIGNE N. 6 18 AVRIL 88 (red)

REVERSE

CETTE A BORDEAUX B 16 MAI 88
REGLES GIRONDE 18 MAI 88
REGLES GIRONDE 19 MAI 88

PHU-LANG-THUONG
TONKIN

Gradually, type E2 postmarks displaced the earlier D1 postmarks. The type E2 postmark was in service for the Phu-Lang-Thuong post office for over three decades.



POSTMARK TYPE: E2
PERIOD OF USE: 1892-1926



POSTAL MARKINGS
PHU-LANG-THUONG TONKIN 17 JUL 96
ANVERS 20 AOUT 1896
36 in circle

PHU-LANG-THUONG
TONKIN

As part of celebrating the turn of the century, post offices shifted from two digits to four digits to represent the year. This variety of Phu-Lang-Thuong's type E2 postmark on an Expeditionary Corps letter presents the year as "1900."



POSTMARK TYPE: E2
PERIOD OF USE: 1892-1926



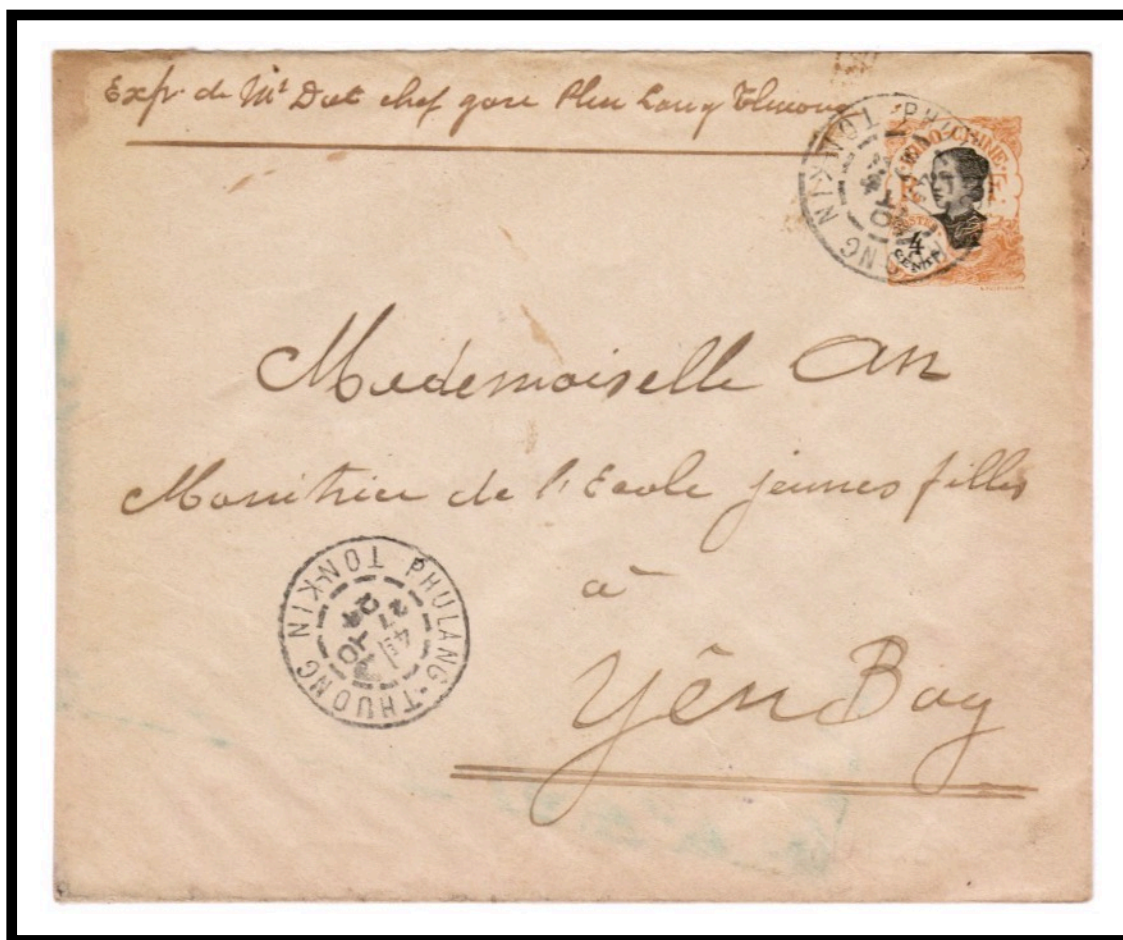
POSTAL MARKINGS
PHU-LANG-THUONG TONKIN 26 NOV 1900

PHULANG-THUONG
TONKIN

Usually, postmarks employed the double hyphen "PHU-LANG-THUONG" spelling. The only postmark that used the single hyphen "PHULANG-THUONG" variation was the type E2(ch) device.



POSTMARK TYPE: E2(ch)
PERIOD OF USE: 1922-25



POSTAL MARKINGS
PHULANG-THUONG TONKIN 27-10 24
REVERSE
HANOI TONKIN 27-10 24
YENBAY TONKIN 28-10 24

PHU-LANG-THUONG
TONKIN

The final postmark employed by the Phu-Lang-Thuong post office was a type G device. The post office ceased operations in 1946.



POSTMARK TYPE: G
PERIOD OF USE: 1926-44



POSTAL MARKINGS
PHU-LANG-THUONG TONKIN 4-8 32
REVERSE
HAI-PHONG TONKIN 4-8 32

PHU LIEN
TONKIN

Although the Phu Lien post office opened 1896, the first reported use of the type D1 postmark is two years later in 1898. This example of an Expeditionary Corps letter bears a strike from Phu Lien's first year of the type D1 postmark.



POSTMARK TYPE: D1
PERIOD OF USE: 1898-1906



POSTAL MARKINGS

PHU LIEN TONKIN 3 SEPT. 98

REVERSE

TONG-KIN HAI-PHONG 3 SEPT. 98
HAIPHONG TONKIN 4 SEPT. 98

PHU-LIEN TONKIN

Only a single postmark style, the type D1 format, is known from Phu-Lien. In 1906, the post office was moved to Kien-An.



POSTMARK TYPE: D1
PERIOD OF USE: 1898-1906



POSTAL MARKINGS
PHU-LIEN TONKIN 20 MARS 05
REVERE
HAIPHONG TONKIN 20 MARS 05
SALZBURG 2 a 5. IV. 05

PHU LIEN
TONKIN

Although the Pu-Lien post office only used the type D1 postmark format, a variety still exists. This example of a non-hyphenated spelling variety "PHU LIEN" is a heretofore unrecorded variation.



POSTMARK TYPE: D1
PERIOD OF USE: 1898-1906



POSTAL MARKINGS
PHU LIEN TONKIN 5 JUIN 99

PHULY TONKIN

Phuly was the chief town in Ha-NAM Province. Phuly's post office opened in 1886. The first postmark that employed the non-hyphenated spelling "PHULY" was a type E2 device that remained in service for nearly four decades.



POSTMARK TYPE: E2
PERIOD OF USE: 1890-1927



POSTAL MARKINGS

PHULY TONKIN 18 AVRIL 03
HAIPHONG TONKIN 19 AVRIL 03
BLISMES NIEVRE 24 MAI 03

PHULY
TONKIN

Designating the month with a numeral instead of an abbreviation, Phuly's type E2(ch) postmark was in service for a decade.



POSTMARK TYPE: E2(ch)
PERIOD OF USE: 1913-23



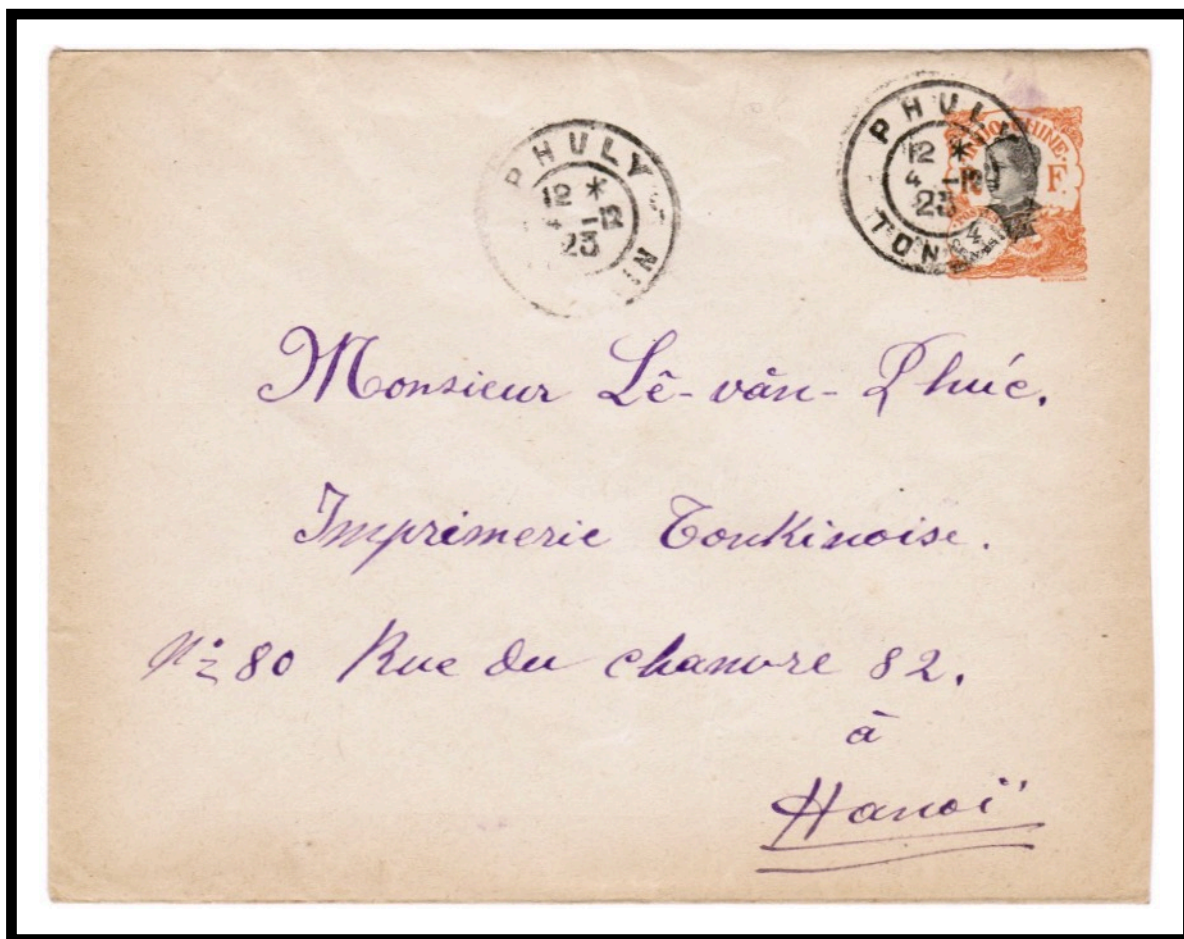
POSTAL MARKINGS
PHULY TONKIN 11-11 13
REVERSE
HA NOI TONKIN 11-11 13

PHULY
TONKIN

A type E1 postmark device used the non-hyphenated "PHULY" spelling for the short time of two years. This example from 1923 is the postmark's earliest recorded use.



POSTMARK TYPE: E1(ch)
PERIOD OF USE: 1923-24



POSTAL MARKINGS
PHULY TONKIN 4-12 23
REVERSE
HA NOI 4-12 23

PHU-LY
TONKIN

The last postmark to use the hyphenated "PHU-LY" spelling was a type G device. It remained in service through World War II until the post office cease operations in 1946.



POSTMARK TYPE: G
PERIOD OF USE: 1926-45



POSTAL MARKINGS
PHU-LY TONKIN 10-1 36
REVERSE
FONTAINEBLEAU SEINE-ET-MARNE 14. II.36

PHUNHOQUAN
TONKIN

First operating as military post office with the name "PHU-NHO," it became a civilian post office with the name "PHU-NHO-QUAN." Its first postmark, a type E2 device, employed the nonhyphenated "PHUNHOQUAN" spelling.



POSTMARK TYPE: E2
PERIOD OF USE: 1908-23



POSTAL MARKINGS
PHUNHOQUAN TONKIN 22 MAI 15
REVERSE
HAIPHONG TONKIN 24-5 15

PHU NHO QUAN
TONKIN

This example shows a previously unrecorded version of the type G postmark with the distinctive spelling "PHO NHO QUAN" with spaces instead of hyphens separating the parts of the name.



POSTMARK TYPE: G
PERIOD OF USE: 1930



POSTAL MARKINGS

PHU NHO QUAN TONKIN 20-8 30
registration label

REVERSE

NINH-BINH TONKIN 21-8 30
HAI-PHONG TONKIN 21-8 30

PHU-NINH-GIAN
TONKIN

Initially established as a military post office that operated during the period 1884-86, Phu-Ninh-Gia became a civilian post office in 1900. The Phu-Ninh-Gian post office first employed the type D2 postmark, with its multiply dashed inner circle, for nearly a quarter century.



POSTMARK TYPE: D2
PERIOD OF USE: 1901-24



POSTAL MARKINGS
PHU-NINH-GIAN TONKIN 6 JUL 18
REVERSE
HAIPHONG TONKIN 7-7 18

PHU-THO
TONKIN

Established on 16 March 1906 with the transfer from Than Ba, the new post office at Phu-Tho started postmarking mail with a type E1 device.



POSTMARK TYPE: E1
PERIOD OF USE: 1906-10



POSTAL MARKINGS

PHU-THO TONKIN 20 JANV 09
2 PARIS 2 DISTRIBUTION 5 MARS 09

REVERSE

HANOI TONKIN 21 JANV 09

PHU-THO
TONKIN

Phu-Tho's final postmark was a type G format. Normally applied with black ink, cancellations were also occasionally struck in blue ink as with this example from 1930.



POSTMARK TYPE: G
PERIOD OF USE: 1923-42



POSTAL MARKINGS
PHU-THO TONKIN 29-3 30 (blue)
REVERSE
HA NOI R.P. TONKIN 29-3 30

PHU-YEN-BINH
TONKIN

The Phu-Yen-Binh post office was established in 1897. Phu-Yen-Binh's first postmark, a type D1 format, was in service for a quarter of a century.



POSTMARK TYPE: D1
PERIOD OF USE: 1899-1925



POSTAL MARKINGS
PHU-YEN-BINH TONKIN 10 NOV 23
REVERSE
HA NOI TONKIN 12-11 23

PHU-YEN-BINH
TONKIN

Phu-Yen-Binh's second and only other postmark was a type G device. The postmark's first year of use was 1930.



POSTMARK TYPE: G
PERIOD OF USE: 1930-37



POSTAL MARKINGS
PHU-YEN-BINH TONKIN 18-9 30
REVERSE
YEN-BAY TONKIN 19-9 30
HA-NOI R.P. TONKIN 20-9 30
THAT-KHE TONKIN 22-9 30

PHU-YEN-BINH
TONKIN

The Phu-Yen-Binh post office ceased operations in 1946. Its final postmark was a type G device and the last reported year of service was 1937.



POSTMARK TYPE: G
PERIOD OF USE: 1930-37



POSTAL MARKINGS
PHU-YEN-BINH TONKIN 11-11 37
airmail label
REVERSE
YEN-BAY TONKIN 12-11 37

POINTE-PAGODE TONKIN

The Pointe-Pagode post office began operations in 1893. The first postmark to appear with the hyphenated "POINTE-PAGODE" spelling was a type D1 device. It remained in service for a quarter of a century.



POSTMARK TYPE: D1
PERIOD OF USE: 1898-1926



POSTAL MARKINGS
POINTE-PAGODE TONKIN 25 OCT. 05
HAIPHONG TONKIN 27 OCT 05
TROYES AUBE 05

POINTE PAGODE
TONKIN

Point Pagode's only postmark with the non-hyphenated spelling "POINTE PAGODE" was in the type E2 format. Point Pagode's type E2 postmark is only known to have been used for two years, 1896-7.



POSTMARK TYPE: E2
PERIOD OF USE: 1896-7



POSTAL MARKINGS
POINTE PAGODE TONKIN 21 MAI 96
REVERSE
HAIPHONG TONKIN 22 MAI 96

PORT-WALLUT TONKIN

Operations began when the Kebao post office moved to Port-Wallut in 1894. Previously, the first use of Port-Wallut's E2 postmark was reported as 1918. This example is now the earliest known use of Port-Wallut's type E2 postmark in 1911.



POSTMARK TYPE: E2
PERIOD OF USE: 1911-29



POSTAL MARKINGS
PORT-WALLUT TONKIN 30 JUL 11
REVERSE
HAIPHONG TONKIN 30 JUL 11
HONG KONG 6 AUG 11

PORT-WALLUT TONKIN

The last postmark that employed three hyphenated "PORT-WALLUT" spelling was a type G device. Port-Wallut's type G postmark was in service for the relatively short period of two years.



POSTMARK TYPE: G
PERIOD OF USE: 1930-31



POSTAL MARKINGS
PORT-WALLUT TONKIN 7-3 31